
REMA CONNECTORS



REMA Group, with locations in Germany, China and the USA, is one of the international technological leaders in the field of high-current contact systems. They develop and produce connector systems for charging electric vehicles, high-current connection materials and crimping tools as well as technologically sophisticated operator interfaces with integrated electronics.

The development of the company was always supported by intensive research and development work. Through targeted knowledge transfer, new markets are continually explored and new, innovative products developed.

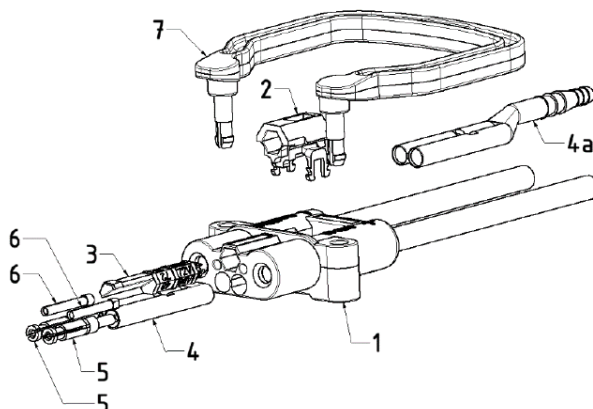
One example is the still unrivalled MRC connector “Molded REMA Connector”. With these patented plug connections, the cable insulation is connected almost inseparably to the plug housing, resulting in a gas-tight and water-tight plug-cable connection. Especially in combination with the RemaFlex cables – also developed in-house – which have a special insulation jacket, this results in a significantly increased load capacity and durability.

MRC Connectors

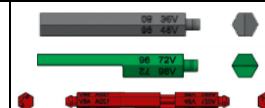
- Patented high power connector which has been specifically designed for the quick and opportunity charging of large battery capacities
- Compliant with DIN EN 0623-589 and EN 1175-
- Various cable sizes from 16 mm² to 95 mm²
- The gas-tight connection between cable and connector housing allows a higher current carrying capacity (Patented MRC technology)
- Used in combination with the REMA Flex cable, which has a special jacket, results in a significantly higher performance and durability.
- Preassembled cables in the different sizes guarantee short installation times and therefore save money.
- High current rated according to DIN VDE 0623-589 (Current Rating II) depending on the cable size
- Special characteristics of the material (chemically coupled, heat and alkali-stabilized copolymer), ensures high resistance against battery acid and UV
- High-grade contacts made out of pure high conductive Cu-ETP copper with silver plated surface and an anti-friction and tarnish coating ensure
 - > a power transition with minimal losses
 - > long life
- Design matches the DIN 80, DIN 160 and DIN 320
- All accessories of the REMA DIN series like coding pins, auxiliary contacts and pilot contacts can be interchangeable.



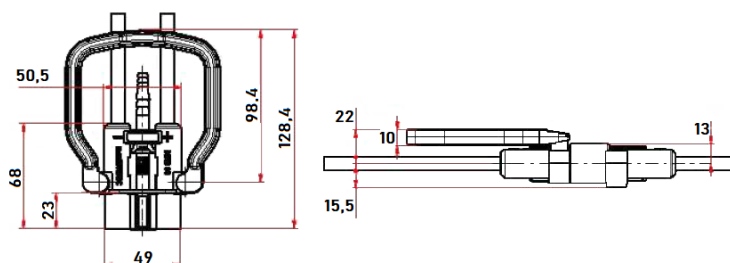
MRC 80/120

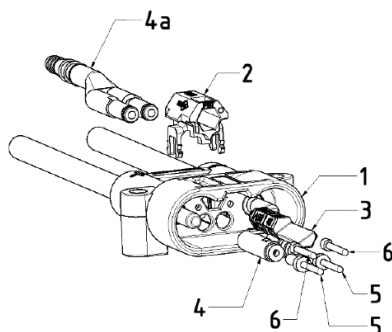


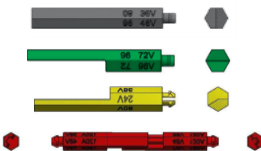
Female connector		
Item	Ordering code	Description
1*	Assembly code*	MRC80F Housing, only available in assembly
2	M93080-48 M93080-53	Coding Pin Support for REMA MRC 80 Female Coding Pin Support for REMA MRC 120 Female
3	75435-00 75438-00 M75057-65	REMA DIN 80 Coding Pin – Gray REMA DIN 80 Coding Pin – Green MRC 120 Coding Pin Female – Red
4/5	75289-00	Pilot Contacts (2 pcs.+ adapter) REMA DIN 80 Female
4a	75070-42	Air Adapter REMA DIN 80 Female
6	M93080-74	Auxiliary Contact REMA MRC 80 Female – 2 pieces



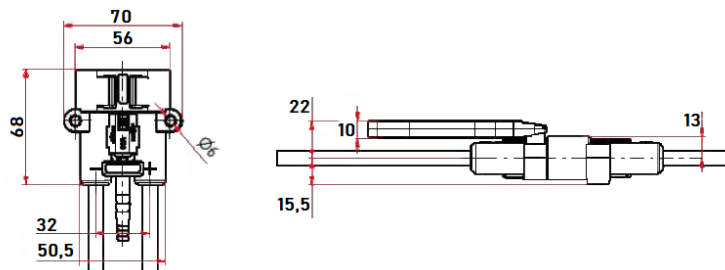
*for ordering, please provide us the assembly code (see table "assembly code" below)








Male connector			
Item	Ordering code	Description	
1	Assembly code*	MRC80M Housing, only available in composition	
2	M93080-04 M93080-05	Coding Pin Support for REMA MRC 80 Male Coding Pin Support for REMA MRC 120 Male	
3	75435-00 75438-00 75436-00 M75057-60	REMA DIN 80 Coding Pin – Gray REMA DIN 80 Coding Pin – Green REMA DIN 80 Coding Pin – Yellow MRC 120 Coding Pin – Male – Red	
4/5	75243-00	Pilot Contacts (2 pcs.+ adapter) REMA DIN 80 Male	
4a	75070-43	Air Adapter REMA DIN 80 Male	
6	M93080-44	Auxiliary Contact REMA MRC 80 Male – 2 pieces	

*for ordering, please provide us the assembly code (see table "assembly code" below)



Accessories		
Picture	Ordering code	Description
	95244-00	Snap-on Handle REMA DIN 80 – Standard
	95244-01	Handle REMA DIN 80 – with screws M6x30
	0702629	Handle Toyota/BT – REMA DIN 80

Assembly code

Example: **MRC80*-F-1-1-24V-2-1-16-1000-650**

Gender: _____

F – Female

M – Male

Handle: _____

0 – No Handle

1 – Standard Handle Screwed

2 – Click-on Handle

Coding Pin: _____

1 – Gray

4 – Red - High Amp (MRC120)

2 – Green

5 – Blue - High Amp (MRC120)

3 – Yellow (only male)

Harness Voltage : _____

*xxV – code pin not mounted, delivered loose

Options: _____

0 – None

4 – Aux. and Pilot Contacts

1 – Aux. Contacts

5 – Air Adapter

2 – Pilot Contacts

6 – Air Adapter + Aux. Contacts

Terminal Connection: _____

1 – Flex

5 – Cable Lug M12

2 – Perfect

6 – Cable Lug M14

3 – Cable Lug M8

9 – Cable Lug M16

4 – Cable Lug M10

0 – Open

Cable Section: _____

16 mm²

25 mm²

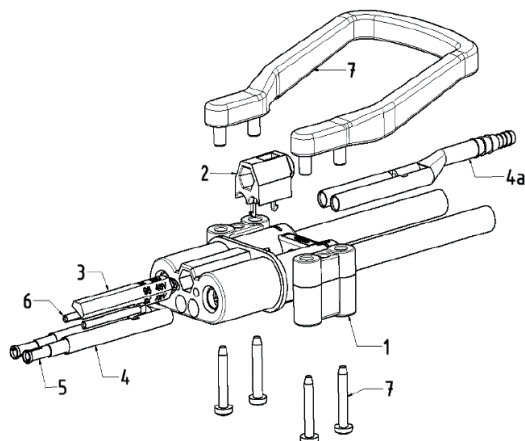
+ Terminal Length in mm: _____

– Terminal Length in mm: _____

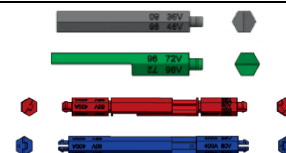
*MRC80 with red or blue coding pin becomes a MRC120

Remark: For special assemblies, please contact us

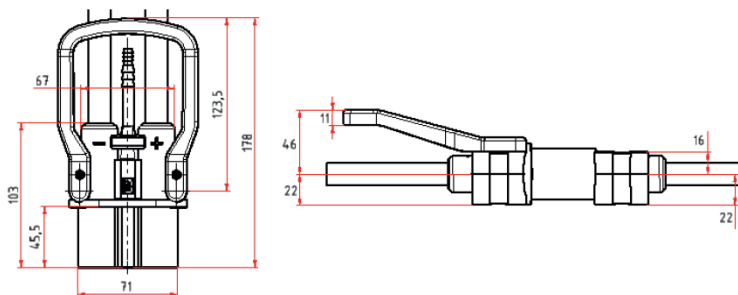
MRC 160/250

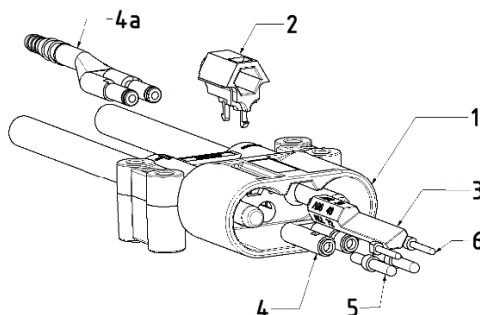


Female connector		
Item	Ordering code	Description
1*	Assembly code*	MRC160/250F Housing, only available in composition
2	M93160-48 M93160-53	Coding Pin Support for REMA MRC 160 Female Coding Pin Support for REMA MRC 250 Female
3	75057-01 75233-01 M75057-75 104594	REMA DIN 160/320 Coding Pin – Gray REMA DIN 160/320 Coding Pin – Green MRC250 Coding Pin – Female – Red MRC250 Coding Pin – Female – Blue
4/5	75068-03	Pilot Contacts (2 pcs.+ adapter) REMA DIN 160 Female
4a	75070-12	Air Adapter REMA DIN 160 Female
6	M93160-74	Auxiliary Contact REMA MRC 160 Female – 2 pieces

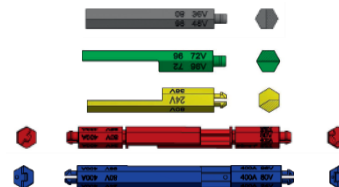


*for ordering, please provide us the assembly code (see table "assembly code" below)

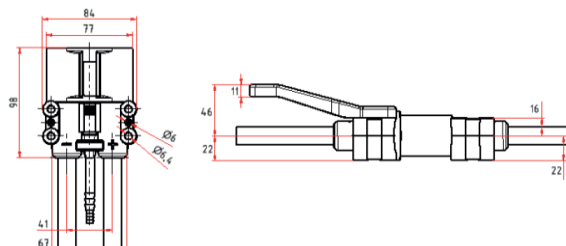






Male connector		
Item	Ordering code	Description
1	Assembly code*	MRC160/250M Housing, only available in composition
2	M93160-04 M93160-05	Coding Pin Support for REMA MRC 160 Male Coding Pin Support for REMA MRC 250 Male
3	75057-01 75233-01 75231-01 M75057-70 104593	REMA DIN 160/320 Coding Pin – Gray REMA DIN 160/320 Coding Pin – Green REMA DIN 160/320 Coding Pin – Yellow MRC250 Coding Pin – Male – Red MRC250 Coding pin – Male – Blue
4	M93160-44	Auxiliary Contact REMA MRC 160 Male – 2 pieces
4a	75070-13	Air Adapter REMA DIN 160 Male
5	75070-03	Pilot Contacts (2 pcs.+ adapter) REMA DIN 160 Male
6	M93160-44	Auxiliary Contact REMA MRC 160 Male – 2 pieces



*for ordering, please provide us the assembly code (see table "assembly code" below)



Accessories		
Picture	Ordering code	Description
	95066-65	Screwed Handle DIN 160 – Standard with 4 screws
	EHDL160/320-TOY	Handle MRC 160-320 A Toyota

Assembly code

Example: **MRC160*-F-1-1-24V-2-1-25-1000-650**

Gender: _____

F – Female

M – Male

Handle: _____

0 – No Handle

1 – Standard Handle Screwed

Coding Pin: _____

1 – Gray

4 – Red - High Amp (MRC250)

2 – Green

5 – Blue - High Amp (MRC250)

3 – Yellow (only male)

Harness Voltage : _____

*xxV – code pin not mounted, delivered loose

Options: _____

0 – None

4 – Aux. and Pilot Contacts

1 – Aux. Contacts

5 – Air adapter

2 – Pilot Contacts

6 – Air Adapter + Aux. Contacts

Terminal Connection: _____

1 – Flex

5 – Cable Lug M12

2 – Perfect

6 – Cable Lug M14

3 – Cable Lug M8

9 – Cable Lug M16

4 – Cable Lug M10

0 – Open

Cable Section: _____

16 mm²

25 mm²

50 mm²

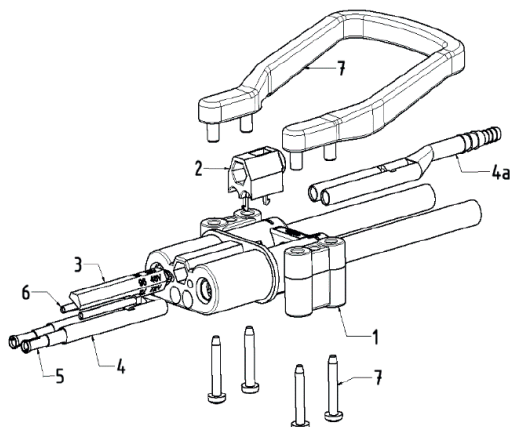
+ Terminal Length in mm: _____

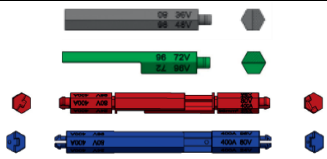
– Terminal Length in mm: _____

*MRC160 with red or blue coding pin becomes a MRC250

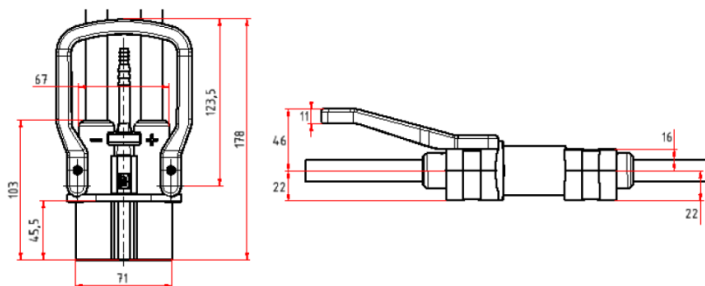
Remark: For special assemblies, please contact us

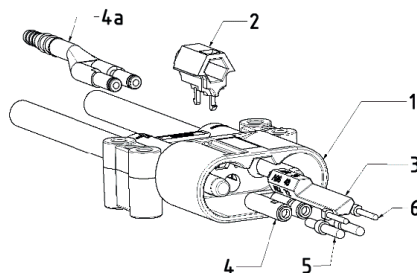
MRC 320/400



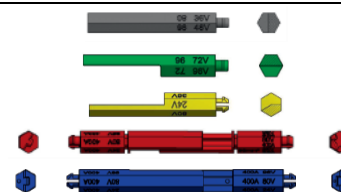
Female connector			
Item	Ordering code	Description	
1*	Assembly code*	MRC320/400F Housing, only available in composition	
2	M93320-48 M93320-53	Coding Pin Support for REMA MRC 320 Female Coding Pin Support for REMA MRC 400 Female	
3	75057-01 75233-01 M75057-85 111376	REMA DIN 160/320 Coding Pin – Gray REMA DIN 160/320 Coding Pin – Green MRC400 Coding Pin Female – Red MRC400 Coding Pin Female – Blue	
4/5	75591-00	Pilot Contacts (2 pcs.+ adapter) REMA DIN 320/640 Female	
4a	75070-32	Air Adapter REMA DIN 320/640 Female	
6	M93320-74	Auxiliary Contact REMA MRC 320 Female – 2 pieces	

*for ordering, please provide us the assembly code (see table "assembly code" below)

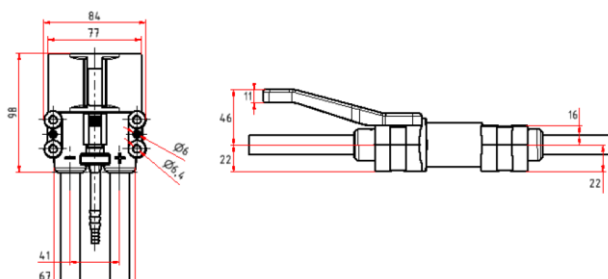






Male connector		
Item	Ordering code	Description
1	Assembly code*	MRC320/400M Housing, only available in composition
2	M93320-04 M93320-05	Coding Pin Support for REMA MRC 320 Male Coding Pin Support for REMA MRC 400 Male
3	75057-01 75233-01 75231-01 M75057-80 111375	REMA DIN 160/320 Coding Pin – Gray REMA DIN 160/320 Coding Pin – Green REMA DIN 160/320 Coding Pin – Yellow MRC400 Coding Pin Male – Red MRC400 Coding Pin Male – Blue
4/5	75596-00	Pilot contacts (2 pcs.+ adapter) REMA DIN 320/640 male
4a	75070-33	Air adapter REMA DIN 320 /640 male
6	M93320-44	Auxiliary contact REMA MRC 320 plug – 2 pieces



*for ordering, please provide us the assembly code (see table "assembly code" below)



Accessories		
Picture	Ordering code	Description
	95066-67	Screwed handle REMA DIN 320 - standard with 4 screws
	EHDL160/320-TOY	Handle MRC 160-320 A Toyota

Assembly code

Example: **MRC320*-F-1-1-24V-2-1-70-1000-650**

Gender: _____

F – Female

M – Male

Handle: _____

0 – No Handle

1 – Standard Handle Screwed

Coding pin: _____

1 – Gray

4 – Red - High Amp (MRC400)

2 – Green

5 – Blue - High Amp (MRC400)

3 – Yellow (only male)

Harness Voltage : _____

*xxV – code pin not mounted, delivered loose

Options: _____

0 – None

4 – Aux. and Pilot Contacts

1 – Aux. Contacts

5 – Air adapter

2 – Pilot Contacts

6 – Air Adapter + Aux. Contacts

Terminal Connection: _____

1 – Flex

5 – Cable Lug M12

2 – Perfect

6 – Cable Lug M14

3 – Cable Lug M8

9 – Cable Lug M16

4 – Cable Lug M10

0 – Open

Cable Section: _____

50 mm²

70 mm²

95 mm²

+ Terminal Length in mm: _____

– Terminal Length in mm: _____

*MRC320 with red or blue coding pin becomes a MRC400

Remark: For special assemblies, please contact us

Conversion table	
10 mm ²	8 AWG
16 mm ²	6 AWG
25 mm ²	4 AWG
35 mm ²	2 AWG
50 mm ²	1/0 AWG
70 mm ²	2/0 AWG
95 mm ²	3/0 AWG
120 mm ²	4/0 AWG
150 mm ²	300 MCM
240 mm ²	500 MCM